



Woodland Way, Winchmore Hill, London, N21
Chain Free £825,000 Freehold

Anthony Webb
ESTATE AGENTS

Woodland Way, Winchmore Hill, London, N21

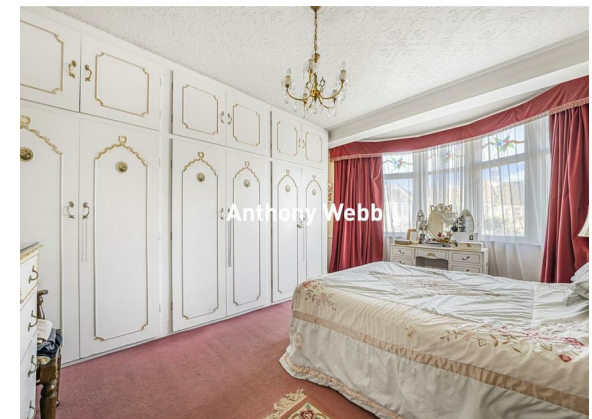
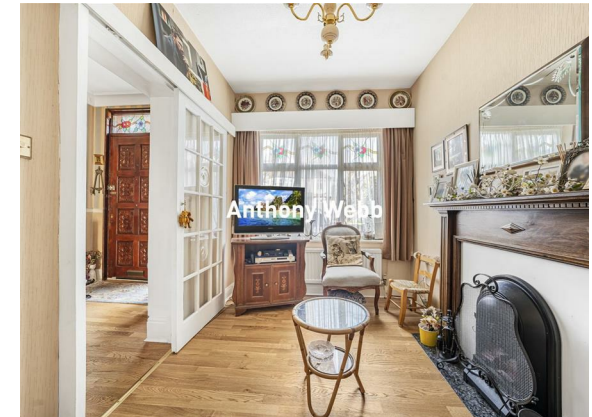
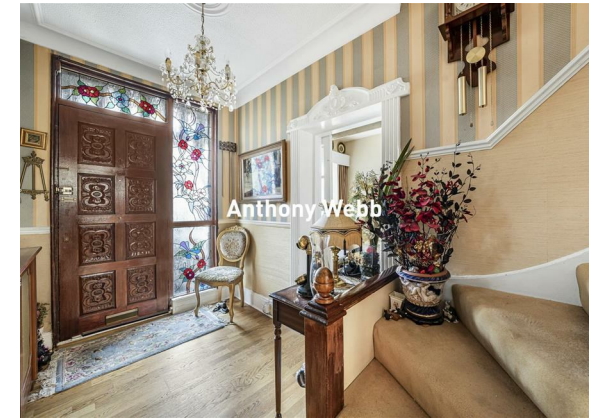
A chain free extended three bedroom 1930's built semi detached house offering in excess of 1400sq ft of bright and airy living space. The property requires updating and offers great potential to create a wonderful family home in a desirable location.

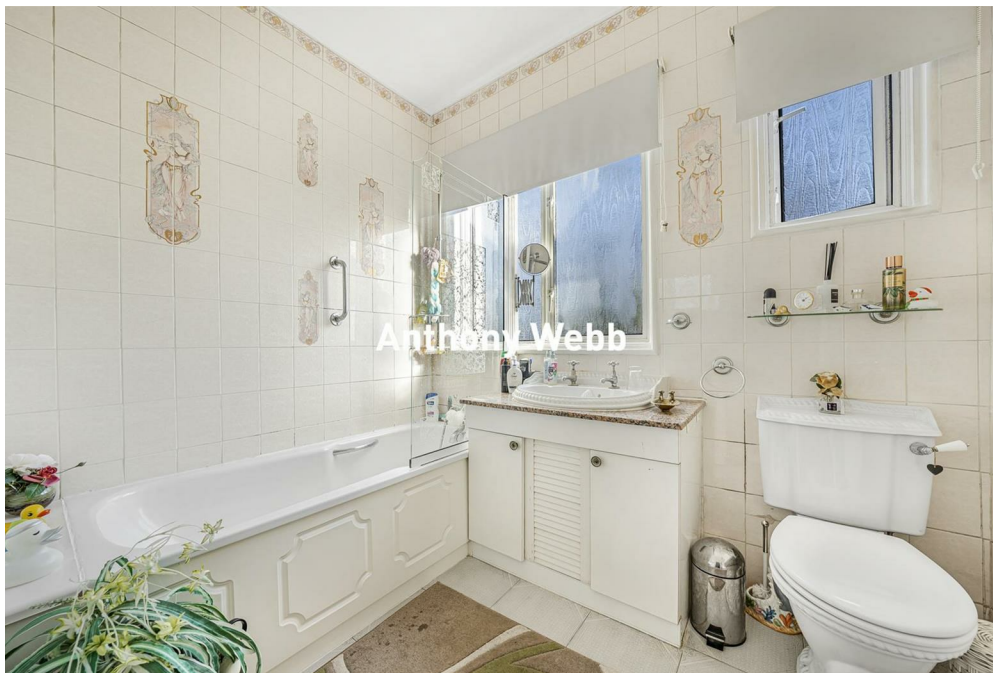
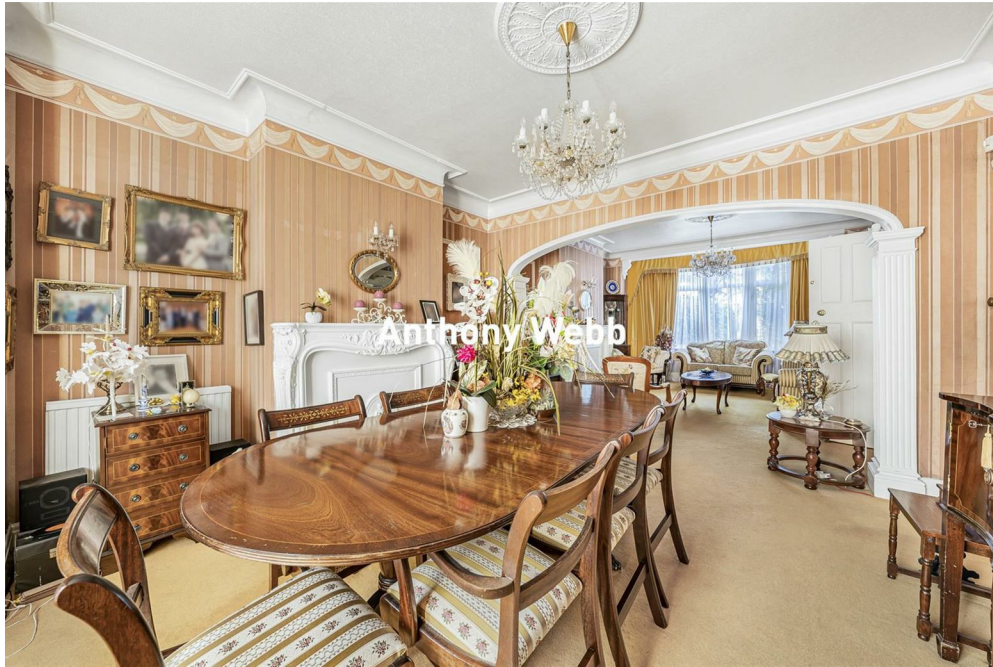
Woodland Way is a very popular residential turning located between Bourne Hill and Downes Court. Conveniently located for both Winchmore Hill and Palmers Greens shops, restaurants, bus routes and mainline stations into Moorgate. Southgate high road and underground station are a short ride away via the W6 bus route. There are several green spaces nearby including Woodcroft wild space and both Grovelands and Broomfield Parks.

Hallway • Spacious through lounge • Extended kitchen/diner • Study • Guest ground floor cloakroom • First floor landing with access to loft space with potential to convert • Two double bedrooms with bay windows • Single bedroom • Good size family bathroom • Gas central heating • Partial double glazing • Off street parking • Fabulous rear garden measuring 100ft x 34ft.

Enfield Council tax band F

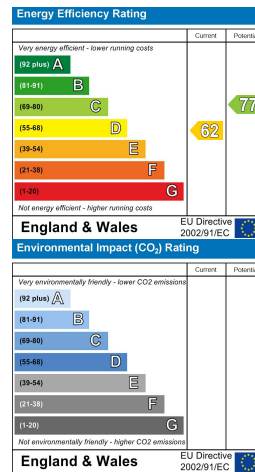
- Three bedrooms
- Extended 1930s built semi-detached house
- Through lounge
- Study+ground w.c
- Kitchen/diner
- Bathroom
- Off street parking
- 100ft rear garden





Woodland Way
Winchmore Hill
London
N21 3QA

Tenure: Freehold
Gross Internal Area: 1407.00 sq ft



Property particulars as supplied by Anthony Webb Estate Agents are set out as a general outline in accordance with the Property Misdescriptions Act (1991) only for the guidance of intending purchasers of lessees, and do not constitute any part of an offer or contract. Details are given without any responsibility, and any intending purchasers, lessees or third parties should not rely on them as inspection or otherwise as to the correctness of each of them. We have not carried out a structural survey and the services, appliances and specific fittings have not been tested. All photographs, measurements, floor plans and distances referred to are given as a guide only and should not be relied upon for the purchase of carpets or any other fixtures statements or representations of fact, but must satisfy themselves by or of fittings, gardens, roof terraces, balconies and communal gardens as well as tenure and lease details cannot have their accuracy guaranteed for intending purchasers. Lease details, service ground rent (where applicable) are given as a guide only and should be checked and confirmed by your solicitor prior to exchange of contracts. no person in the employment of Anthony Webb has any authority to make any representation or warranty whatever in relation to this property.

348 Green Lanes, Palmers Green, London N13 5TJ
020 8882 7888
palmersgreen@anthonywebb.co.uk
anthonywebb.co.uk